

UPASANA
CENTRIC
Tonk Road, Jaipur

PRIME • PREMIUM • PERFECT



Driven by the dream of changing the structure of Jaipur cityscape and giving its skyline a progressive signature, Upasana Group was established in the year 1991. The parameters of success for the group have been defined by the fact that the group has raised its credibility amongst its peers by the virtue of maintaining honesty, integrity, and highest level of quality in its economically harmonized projects.

Bettering self-established standards, creating a highly specialized team of trained professionals, sharing a common focus and inspiring Jaipur Real Estate industry through innovation, pure professionalism, and timely possessions have been a part of success mantra that today contributes to Upasana's dazzling backdrop.

The Group's approach is holistic, combining strategy, planning and methodical research to incorporate economic, environmental, technological and community insights. Talk of the Super Luxury Apartments, commercial projects, farm house projects, eco-friendly living concepts, quality rated buildings, townships in Jaipur. The group makes the most creative use of space, to enhance the beautiful living spaces, which transform themselves into gifted landmarks having a class of their own.

We Don't sell. We Enhance Trust

Well Supported Facts:

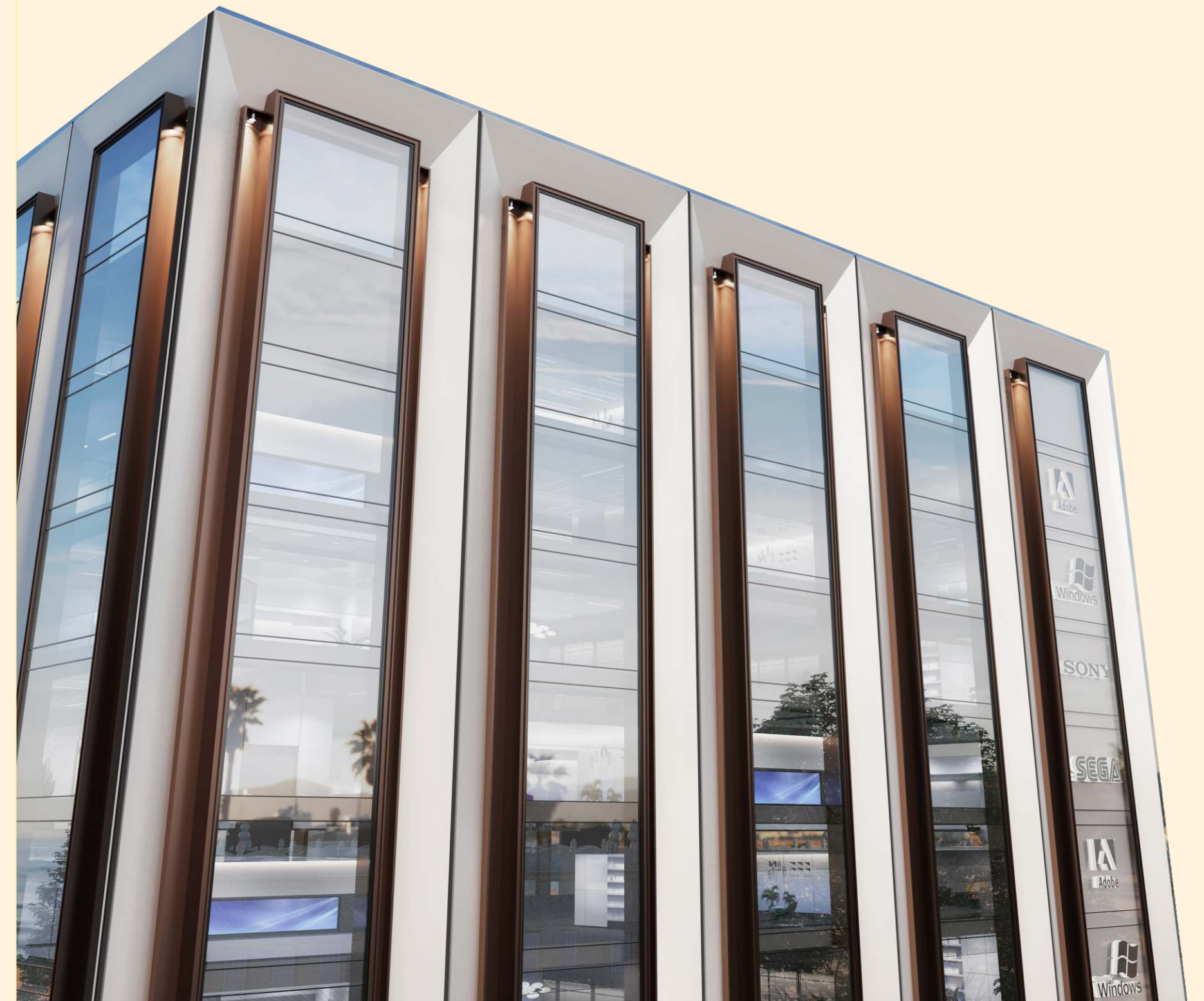
- | | |
|---------------------------------------|--|
| 32 + Years of Excellence | 7 Million sq.ft. area already delivered |
| 70 + Project delivered | 100 + National & International brands associated with Upasana |
| 2200 + Happy Families Residing | 360 Degree facility & life cycle management |



Welcome to UPASANA CENTRIC

Jaipur's most centrally located business hub at main Tonk Road.

Upasana centric perfectly positioned to be the bustling new centre of commerce, giving your business the iconic address it deserve. The commercial centre integrates state-of-the art office space with the finest retail prospects to give you an experience that is truly holistic.





UPASANA presents
Corporate Offices | Commercial Spaces
design business for rise.!

Welcomes to the most strategically located business destination in Jaipur .
In another words a location that makes business and pleasure equally accessible. So if you are in the market
for a commercial space that will attract serious footfalls or a plush office space, look no further.

The 'Upasana Centric' has a concept that combines Corporate offices, Retail spaces, with open
terrace restaurant making it one of the most sought-after commercial addresses in town.

**Location Empowers
the business growth
we make sure you choose
the prominent one.**

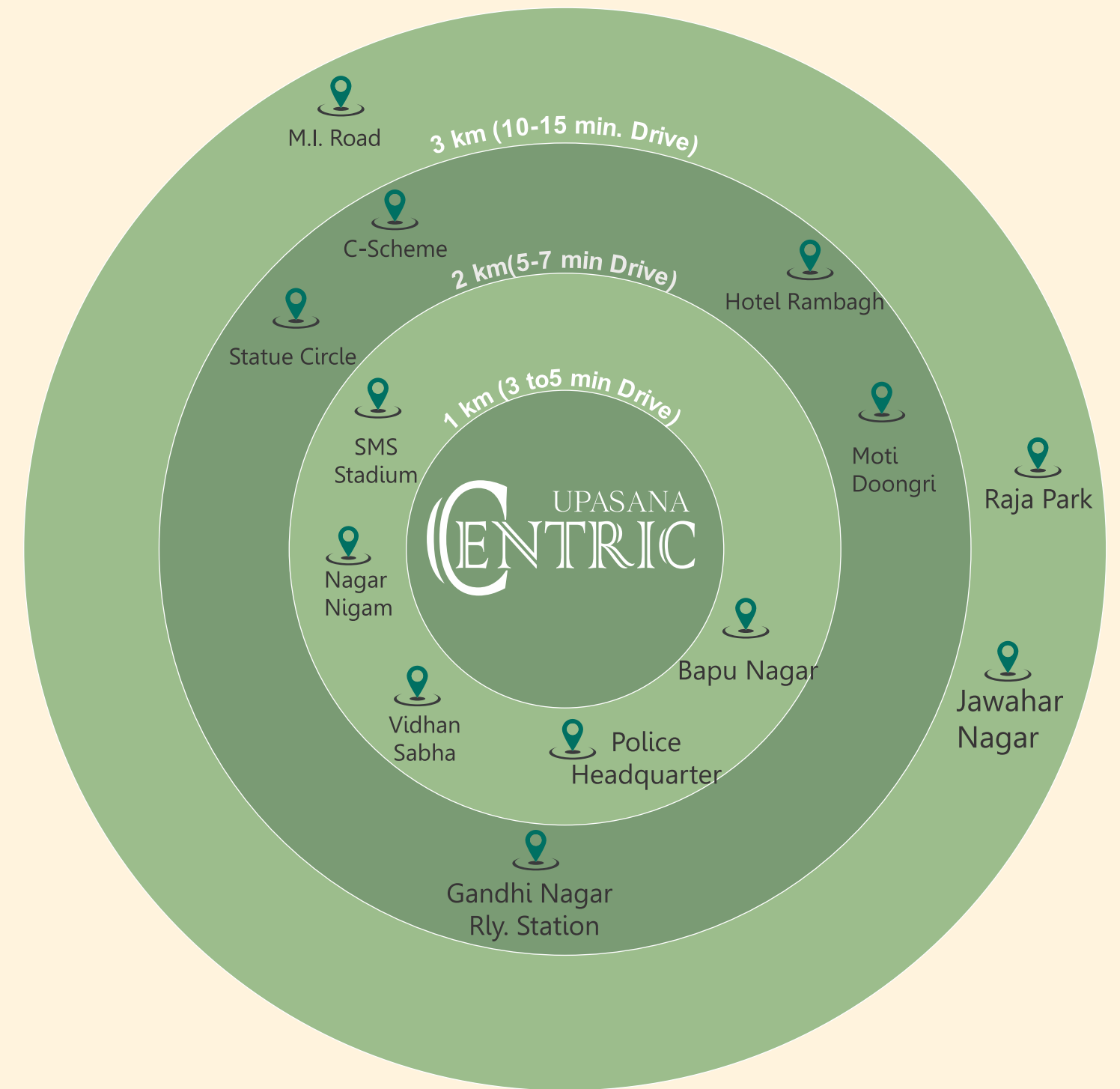


Upasana's most Iconic
Business Landmark





EVERYTHING WITHIN NEARBY LOCATIONS



Project Highlights



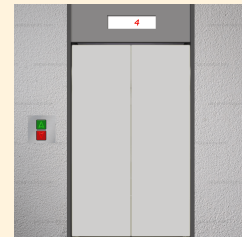
PARKING FLOOR
Three Basement Parking.



BEST IN CLASS
Floor to floor height of 10.5 ft.



WORLD CLASS RECEPTION LOBBY
5 Star double height welcome area



STATE -OF- ART VERTICAL TRANSPORTATION
4 high speed passenger lifts + 1 service lift.



EV CHARGING STATION
Future Ready



SIT- OUT OPEN SPACE
Sit out space with Rooftop restaurant



FITNESS CENTRE
Stay Fit & Rejuvenate yourself



CAFETERIA
Food with fun

Amenities



100% Power Backup



24 hrs. Security



Building Maintained by a professional agency



CCTV Camera



Fire Sprinklers





Corporate Offices

(3rd to 12th floor)

Not just a business address

A way of life

A lot of planning and experience has gone in the offices floor at Upasana's new commercial Project Centric, at main Tonk Road, Jaipur.

The unique architecture is such that open, green expanses are mixed with office clusters to offer breathing space and the freedom of holding business meetings inside your offices premises to enjoy the working atmosphere.

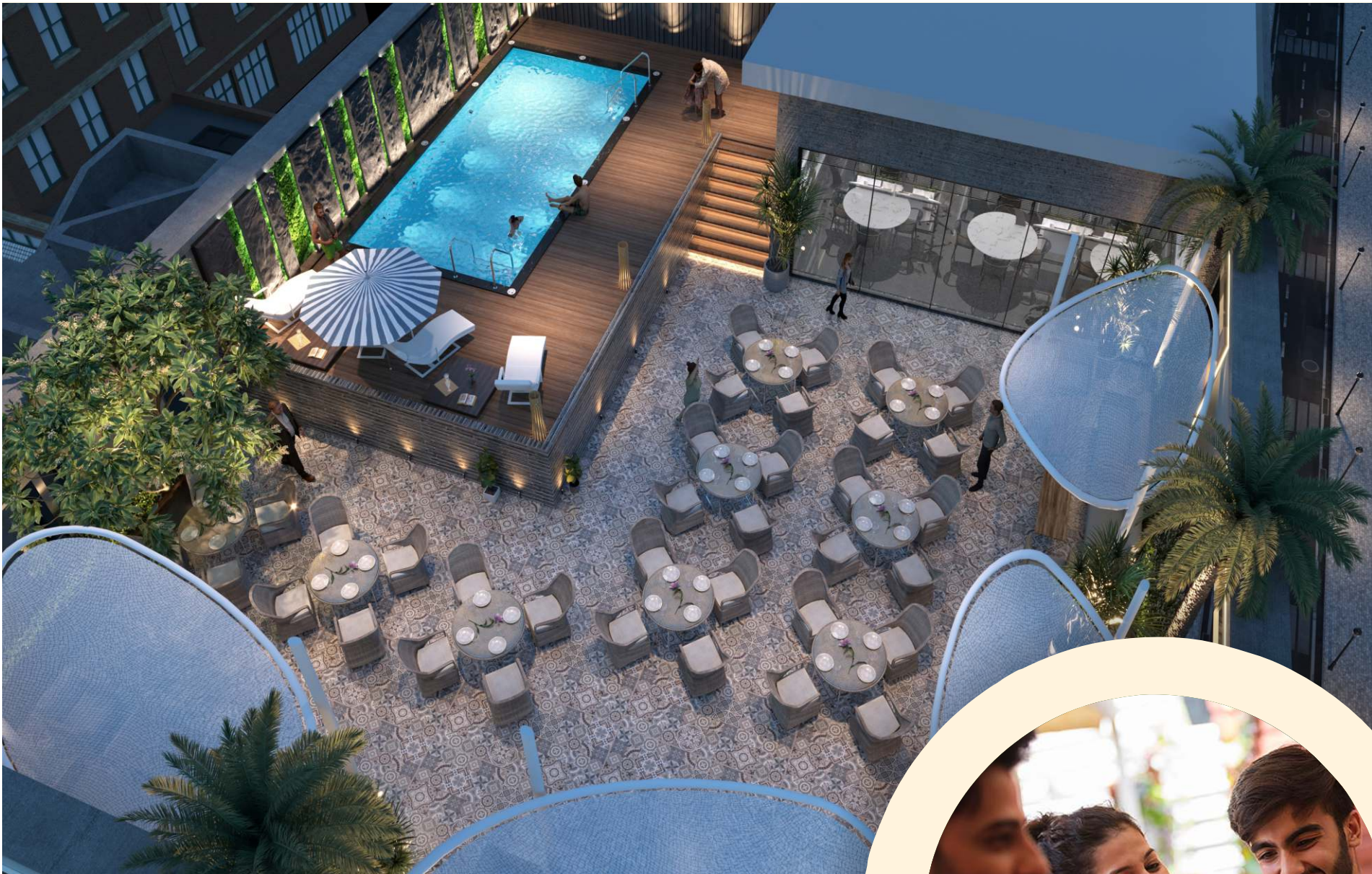


Retail Floors

(Ground, 1st & 2nd floor)

A World beyond business.

We at Upasana Centric give you the convenience of one stop shop. The aesthetically designed swanky glass front showrooms will not just offer great visibility but also increase footfalls in the entire neighborhood .



Terrace Restaurant

Work Hard - Party Harder !

Enjoy discussing more efficiency boosting ideas while enjoying the finest cuisine that offers from lunch to dinner and everything in between.

Flexibly designed rooftop restaurant allow to create your ambience, ensuring that everything you need is within easy access.



Parking

Enjoy smart parking!

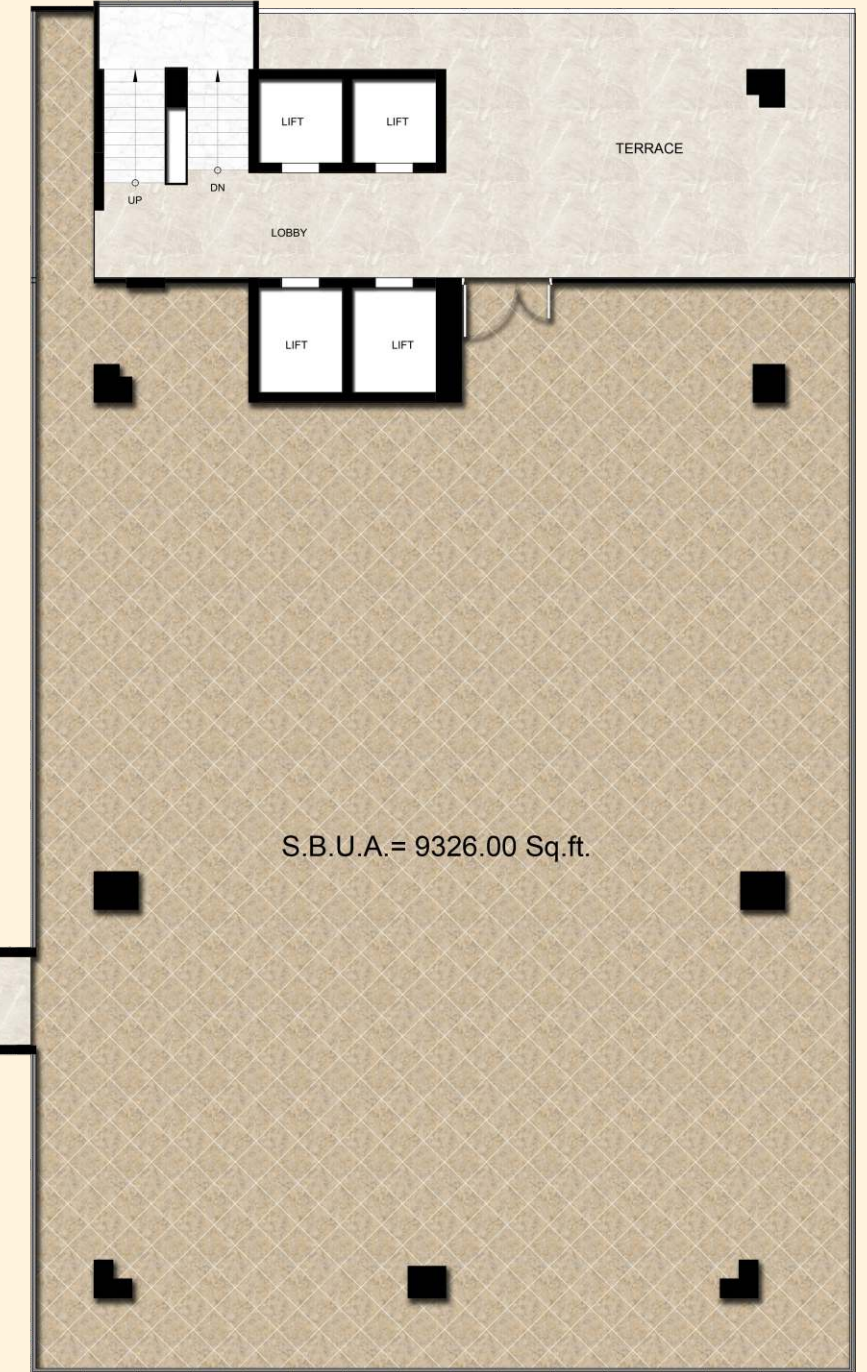
Your race to find to a parking spot will now come to an end with our 3 dedicated basements for easy parking that saves your valuable time so that you reach your office smiling and happy.

Retail Space

Office Space

2nd Floor Plan

Floor Plan 7th & 11th

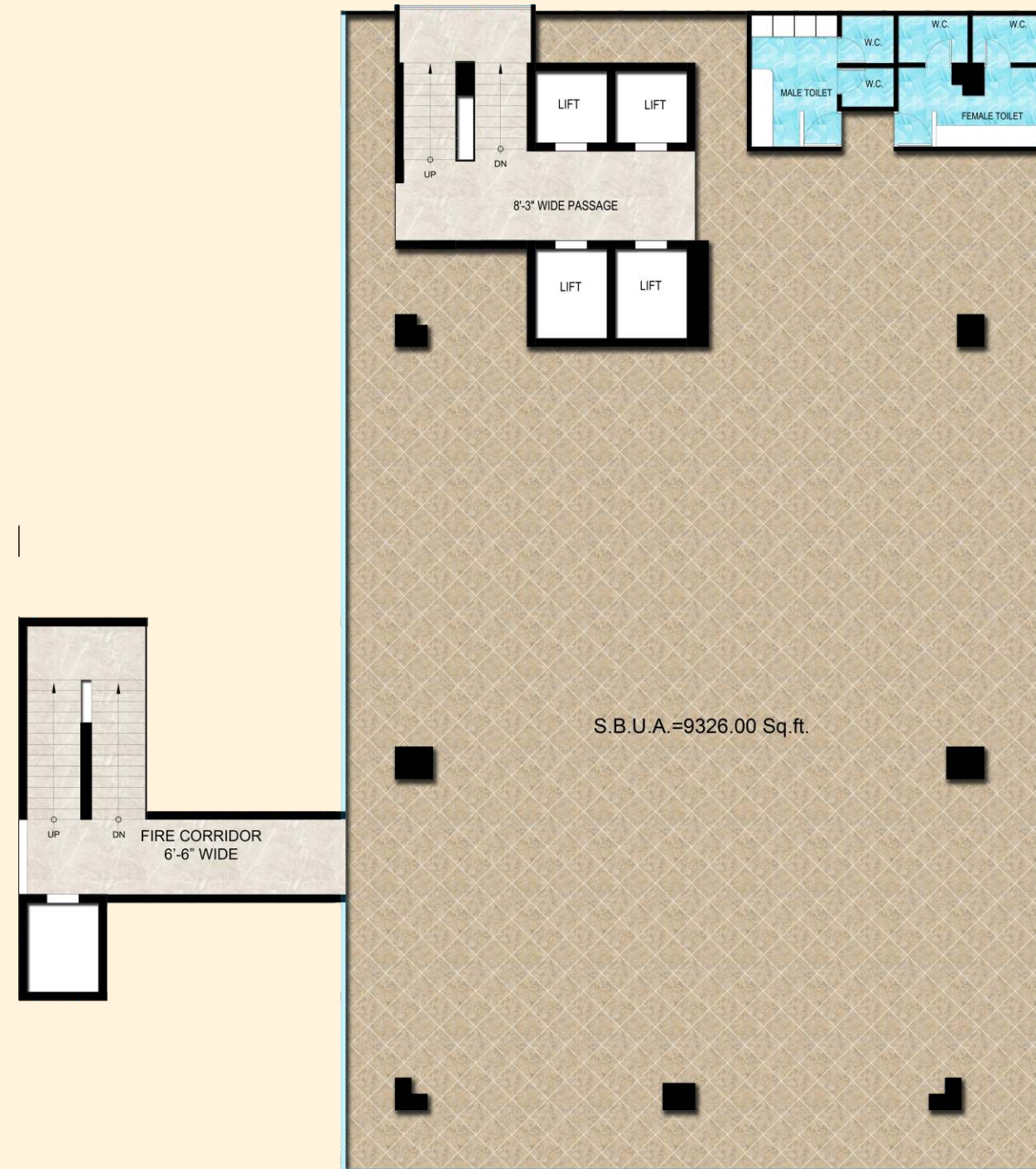


| S.No. | BUILT UP AREA SFT | SUPER BUILT UP AREA SFT |
|-------|-------------------|-------------------------|
| S-2 | 6217.34 | 9326.01 |

| S.No. | SUPER BUILT UP AREA SFT |
|-------|-------------------------|
| 701 | 9326.00 |
| 1101 | 9326.00 |



Office Space



| S.No. | SUPER BUILT UP AREA SFT |
|-------|-------------------------|
| 301 | 9326.01 |
| 401 | 9326.01 |
| 501 | 9326.01 |
| 601 | 9326.01 |

| S.No. | SUPER BUILT UP AREA SFT |
|-------|-------------------------|
| 801 | 9326.01 |
| 901 | 9326.01 |
| 1001 | 9326.01 |
| 1201 | 9326.01 |



Terrace Restaurant



| S.No. | SUPER BUILT UP AREA SFT |
|-------|-------------------------|
| T-1 | 9326.01 |



Specifications

Exterior

- Magnificent & attractive modern elevation in combination of glass, ACP & paint.

Interiors

- Exclusive designer vitrified tiles / granite / stone on floor & staircase.
- Broadband ready internet connections to office spaces
- Vastu friendly.

Fire Safety

- All areas fully equipped with latest fire fighting system (sprinklers & smoke detectors, wet risers & fire extinguishers) in common areas only.
- Fire fighting static water tanks with fire pumps.
- Fire escape staircase.
- Fire hydrant in exterior areas.

Parking

- Three layer basement for car parking
- Open car parking on ground floor

Toilets

- Premium fixtures & fittings in toilets.
- Combination of ceramic tiles / stone /granite / marble for flooring & wall dado
- Sensor operated taps and flushing system for hygiene in toilets.

Lighting

- Advanced lighting fixtures including energy efficient lamps, compact florescent burners.

- Ample light & ventilation for offices.
- Power connection to all saleable areas.

Electrical wiring & fittings

- Total concealed provided with electrolytic copper conductors
- AC Provision for all offices.
- Premium modular switches.

Power backup

- 100% power backup through silent generators for common areas, office / retail floors.

Vertical Circulation

- Passenger & service lift.
- Best vertical transportation with automatic lift connecting all floors
- 4 high speed lifts each of 16 passenger capacity, dedicated exclusively for the office floors + 1 service lift.

Building Maintenance

- Building management by a professional agency
- 24x7 security with CCTV cameras.
- House keeping agency for proper cleaning

Other Features

- Earthquake resistant RCC frame structure complying with seismic zone II specifications.
- Energy efficient building.
- Rain water harvesting system.
- Outer development with landscaping and fountains.
- Sewage treatment plant (STP) for recycling water based.
- Elegant reception lobby and waiting area with electronic security features.





Green Building Certified

Going green isn't just a phrase we followed and praised throughout the time passed. Water and other non renewable resources we need to conserve, are well preserved at Upasana Centric.

We are continuously progressing towards creating a 100% eco friendly environment.

With U.S. approved rating for energy and environment - friendly design we intend to make

"Centric a gold certified building"

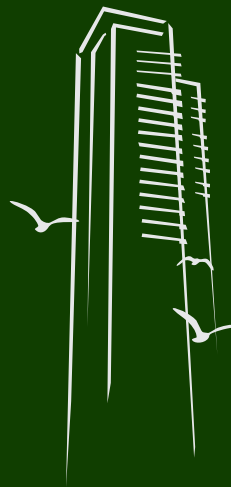
And it perfectly utilises the concept of energy harnessing through various conventional and contemporary technological advancements

FEW OF OUR LANDMARK PROJECTS

| Completed Residential Projects | | Ongoing Residential Projects | |
|--|--|--|--|
|  <p>5TH AVENUE Prithviraj Road, C-Scheme, Jaipur RERA Registration No. :RAJ/P/2017/166</p> |  <p>SAGAR VEDA Kalwar Road, Jaipur RERA Registration No. :RAJ/P/2017/167</p> |  <p>PARK WEST Main Queens Road, Jaipur</p> |  <p>1ST AVENUE B-92, Gopal Bari, Nr. C-Scheme, M.I. Road, Jaipur RERA Registration No. :RAJ/P/2017/534</p> |
| Completed Commercial Projects | | Coming Soon | |
|  <p>APNA BAZAR Old Lata Cinema circle, Jaipur</p> |  <p>MAN UPASANA Chomu House Circle, C-Scheme, Jaipur</p> |  <p>AZURE 5 BHK Luxury Apartment at Shanti Path</p> |  <p>CBD Central Business District Near Hotel Lalit</p> |

Brands who trust us





UPASANA
CENTRIC
Tonk Road, Jaipur




UPASANA

UPASANA GROUP

Upasana House, B-70, Rajendra Marg, Bapu Nagar, Jaipur

Website : www.upasanagroup.com

E-Mail : sales@upasnagroup.com

 **+91 9314 500 005**

Like or Follow us :

 facebook.com/upasnagroup

 [@upasana_group](https://youtube.com/upasana_group)

 [@upasanagroup](https://instagram.com/upasanagroup)

Disclaimer : This brochure is purely conceptual and not a legal offering. Further the promoters / architect reserves the right to add / delete / modify any details / specifications / elevation mentioned here in.